

# AZULLC®

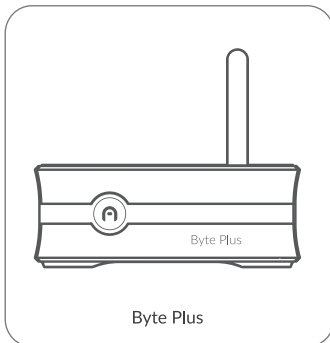


Fanless Windows Mini Desktop PC

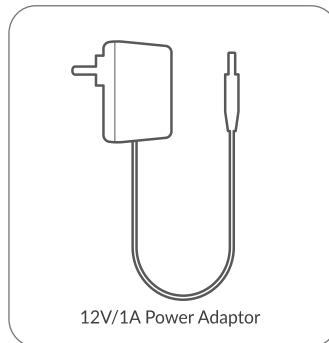
**Byte Plus** | Quick Guide

## Package Contents

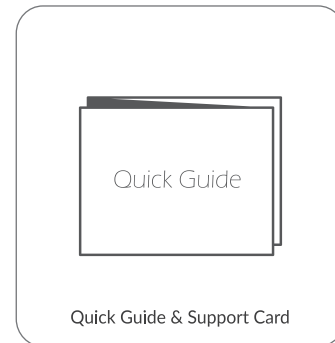
1



Byte Plus



12V/1A Power Adaptor



Quick Guide & Support Card

## Product Specifications

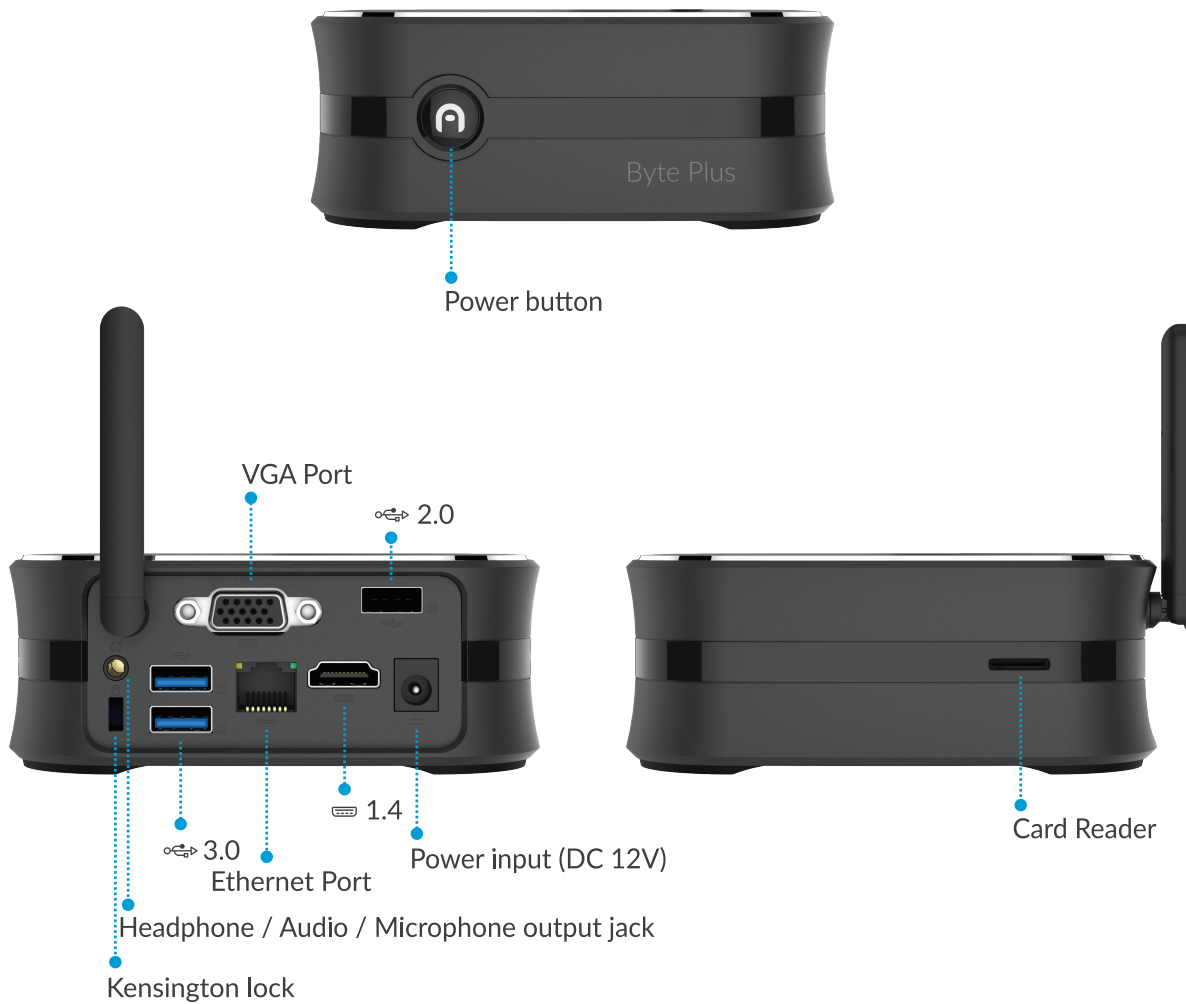
2

Processor	Intel® CherryTrail Z8350 Quad-Core, 1.44 GHz (Burst speed up to 1.84 GHz)
Graphics Processor	Intel® HD Graphics
RAM	2GB DDR3L
Storage	32GB eMMC Expandable
Operating System	Windows 10

Intel Inside and the Intel Inside logo are trademarks of Intel Corporation in the U.S. and/or other countries.  
Windows is either a registered trademark or a trademark of Microsoft Corporation in the U.S. and/or other countries.

\*This equipment has been tested and found to comply with the limits for a Class B digital device, pursuant to Part 15 of the FCC Rules. These limits are designed to provide reasonable protection against harmful interference in a residential installation. This equipment generates uses and can radiate radio frequency energy and, if not installed and used in accordance with the instructions, may cause harmful interference to radio communications. However, there is no guarantee that interference will not occur in a particular installation. If this equipment does cause harmful interference to radio or television reception, which can be determined by turning the equipment off and on, the user is encouraged to try to correct the interference by one or more of the following measures: -- Reorient or relocate the receiving antenna. -- Increase the separation between the equipment and receiver. -- Connect the equipment into an outlet on a circuit different from that to which the receiver is connected. -- Consult the dealer or an experienced radio/TV technician for help. This device complies with part 15 of the FCC Rules. Operation is subject to the following two conditions: (1) This device may not cause harmful interference, and (2) this device must accept any interference received, including interference that may cause undesired operation. Changes or modifications not expressly approved by the party responsible for compliance could void the user's authority to operate the equipment. The antenna(s) used for this transmitter must be installed to provide a separation distance of at least 20 cm from all persons during the normal operations

## Port Layout



\*\*Visit [www.azulletech.com](http://www.azulletech.com) for full details

## Connect to HDTV/Monitor 4

### 4 Processor

Adjusting the resolution of video output via VGA to HDTV or monitor

Follow the steps below to enable audio output when connecting the Byte Plus to a TV or audio devices.

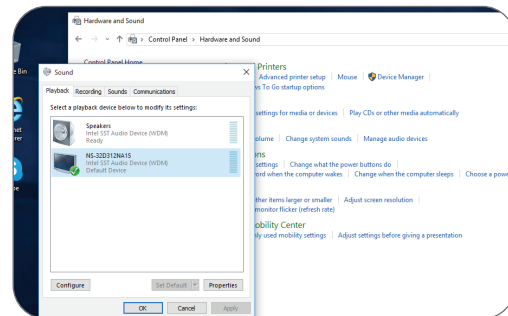
1. Right click and choose “Graphics Properties”
2. Double click “Display”
3. Choose the desired “Resolution” and “Refresh Rate” to adjust the desired display on screen



### Configuring Audio

Follow the steps below to adjust the video output when connecting the Byte Plus to a HDTV or monitor.

1. Access the sound settings via the system “Control Panel”
2. Under “Playback Devices”, click the display device that corresponds with your audio compatible display
3. Click the “Set Default” button in the lower right hand corner
4. Click “OK” to exit the setup



Connect with us! @azulletech



Customer Service

info@azulletech.com  
www.azulletech.com  
Tel: (786)233-6769